



# Continental Autodiagnos™ Pro

## Automotive Diagnostic System

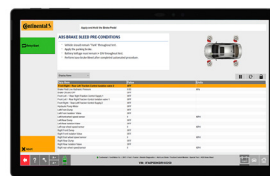
### Scan, Diagnose, and Repair Vehicles Faster with Autodiagnos™ Pro

For professional technicians who need to diagnose and repair vehicles quickly and accurately, Autodiagnos™ Pro uses some of the most advanced and versatile technology available to quickly diagnose today's sophisticated vehicles.

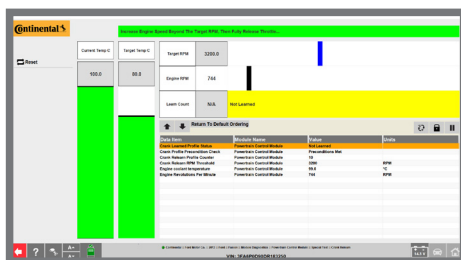
More than just a diagnostic tool, Autodiagnos™ Pro is a resource that is updated as vehicles evolve. Designed by engineers who develop assembly line testing tools and diagnostic systems for OEMs, Autodiagnos™ Pro is engineered, supported, and its key hardware built in the USA.

### Innovative Technology, Maximum Value

Backed by the Continental name for exceptional quality, Autodiagnos™ Pro is engineered to help you maximize your shop's profitability and accuracy while minimizing your upfront investment. Offered as a subscription, Autodiagnos™ Pro can be used with your existing Windows tablet or laptop. An optional tablet bundle which includes a Microsoft Surface Go tablet and protective case, is also available.



Microsoft Surface Go Tablet with protective case available as an optional bundle.



### Fast

- › DTCs reported in 20-30 seconds on average.
- › Fast, accurate data in list, graph, and gauge formats.
- › Decodes VIN in seconds.

### Economical

- › Subscription based model - no large hardware investment.
- › Initial purchase includes first year subscription.
- › Use your existing tablet, laptop, or desktop, or bundle with a new tablet when you purchase.

### Versatile

- › History is collected on every component during the analysis.
- › Access to vehicle diagnostic and repair information such as that provided by Identifix, Mitchell 1, ALLDATA, and others right from the scan tool.
- › Link to free online resources to research DTCs and vehicle conditions.

### Technician-Friendly

- › Super-fast, clear, and sharp user interface.
- › LEDs confirm connection and VCI communications.
- › Audible alarm reminds technicians to disconnect the VCI
- › Snapshot replay - automated data recording allows for seamless data review, export, and import.
- › Vehicle Communication Interface allows OE diagnostic applications to run.
- › Technician controls what's seen on the tool and how it's seen—including customizable data lists and graphing capabilities.
- › Multiple configurations to meet unique technician and shop needs.

### Just-in-time Vehicle Data

- › Clear, sharp, intuitive live data display
- › Regular updates are downloaded from the internet to keep tool data up-to-date.
- › Software and the operating system are upgradable over the life of the tool providing new features and up-to-date vehicle parc data.

## Technical Specifications

### VCI Specifications

- Certification Meets SAE J1962
- Operating Voltage 4 - 30 Volts DC
- Power Consumption Operating ~100 mA @ 12 Volts DC
- Temperature Range -40 degrees to 140 degrees Fahrenheit (-40° - 60° C)
- Dimensions (H X W X D) 4.56 x 1.96 x 1.06 in (116 x 50 x 27 mm)
- Weight 0.1 lbs (0.450 kg)
- Warranty 1 Year
- External Connectors OBD II - male connector (built-in, built user replaceable) and microUSB
- PC connection USB2.0 full speed
- Bluetooth 3.0 Class 1 (100m/325 ft. range)
- Audible alert +90dB beeper
- FCC Codes ID: X3ZBTMOD3 IC: 88228A-MOD3
- LED status indicators: Power on, Device communication, Fail/Error

### Scan Tool Protocols

- HS CAN: ISO14229, ISO 15765 full multi-frame message support
- KWP2000 ISO 14230 / 9141-2 K Line
- J1850 VPW / PWM (GM Class2 / Ford SCP, Chrysler J1850)
- Chrysler SCI
- Single Wire CAN
- Ford BP
- Honda Diag-H

### Software Minimum Requirements

- Windows 7, 8, or 10
- ~355MB Hard Drive space (installed)

### Tablet Specifications / Features

- Windows 10 Professional
- Intel Pentium 4415Y 1.6 GHz
- 8 GB LPDDR3 (1866 MHz)
- 128 GB - eMMC SSD
- 10" touchscreen 1800 x 1200 (Gorilla glass 3, PixelSense, 217 ppi)
- Intel HD Graphics 615
- Integrated 1080p Web Cam (8 Megapixel (rear), 5 Megapixel (front))
- 802.11ac Wireless LAN; Bluetooth 4.1
- 2W stereo speakers with Dolby Audio Premium
- Up to 9 Hours Battery Life
- Trusted Platform Module (TPM 2.0) Security Chip
- Silver (Magnesium alloy)
- Connectivity: 1 ea. USB-C 3.1 | Surface Connect | 3.5 mm Headphone output | Dock | microSDXC
- 24 Watt power supply
- 9.65 in x 6.9 in x 0.33 in
- 18.41 oz (1.15 lbs.)

### Software Download

For more information or to download software, please visit [www.autodiagnospro.com](http://www.autodiagnospro.com)